

est 1979

Jeremy
Leaf & Co.



est 1979
Jeremy
Leaf & Co.



Ballards Lane, Finchley, London

£450,000

- Lease - 990+ years remaining
- Two double bedrooms
- Council Tax - Band C
- Communal garden
- 0.6 miles to West Finchley tube station
- Share of freehold
- Service charges - £2120.67 p.a
- Separate bathroom and toilet
- Close to shops and transport links

863 High Road, London, N12 8PT
020 8446 4295

property@jeremyleaf.co.uk
<https://www.jeremyleaf.co.uk/>

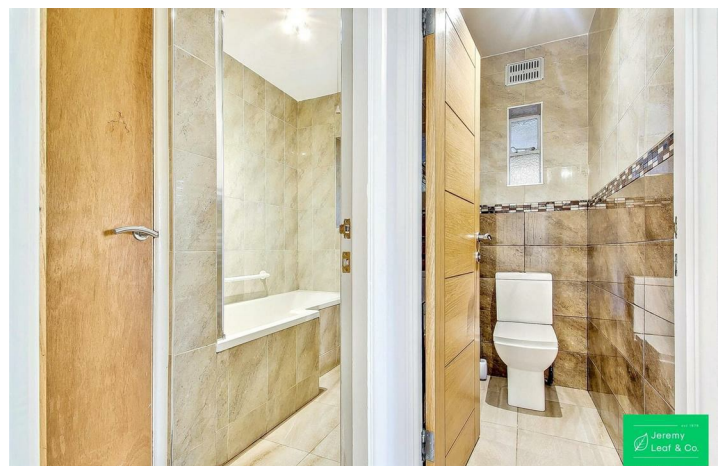
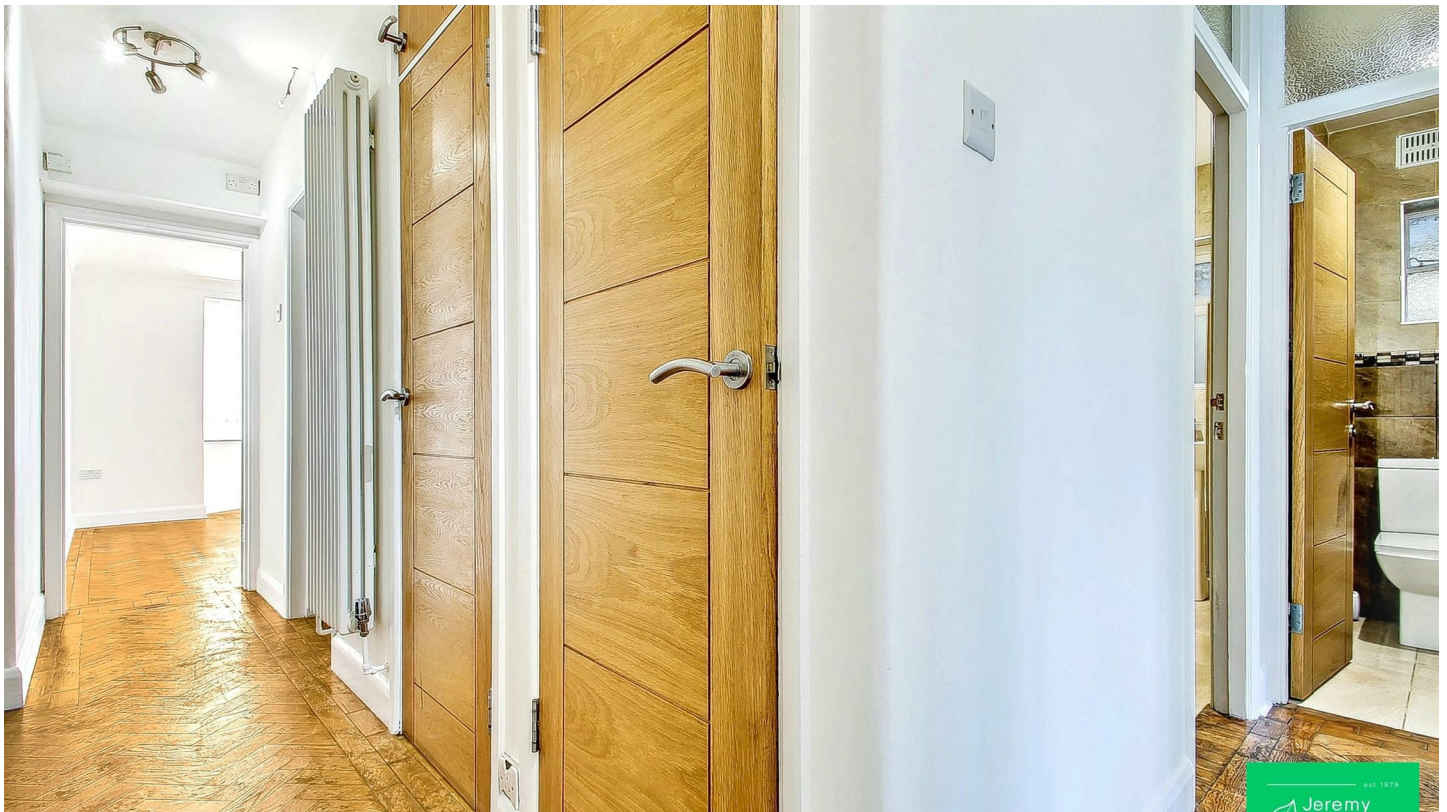
Ballards Lane, Finchley, London, N12 0ES

Share of freehold Jeremy Leaf & Co are very pleased to present this bright and spacious ground floor apartment in a purpose built development. With two double bedrooms, separate kitchen, reception room, original wooden flooring, fitted wardrobes and direct access to a communal rear garden. Offered chain free, this property is ideally located on Ballards Lane, a short distance from the shops, amenities and transport links of North Finchley with West Finchley only 0.6 miles away (Northern Line).

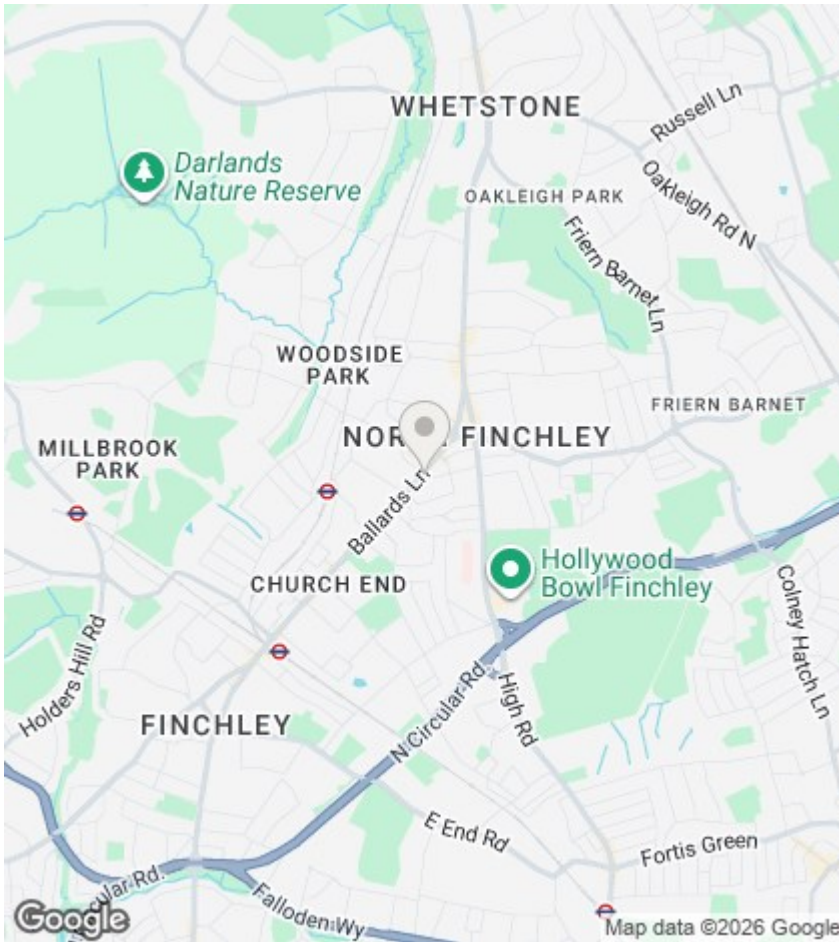
Council Tax band - C / Lease - 990+ years



Council Tax Band: D







Directions

Viewings

Viewings by arrangement only. Call 020 8446 4295 to make an appointment.

EPC Rating:

D

Energy Efficiency Rating		Current	Potential
Very energy efficient - lower running costs			
(92 plus) A			
(81-91) B			
(69-80) C			
(55-68) D		66	80
(39-54) E			
(21-38) F			
(1-20) G			
Not energy efficient - higher running costs			
England & Wales		EU Directive 2002/91/EC	

